

# SLIDE CYLINDER

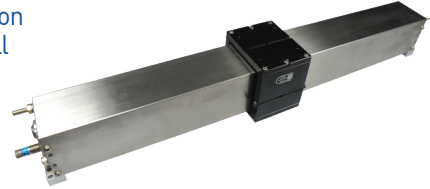
RHC-30, 40, 50, 63, 80



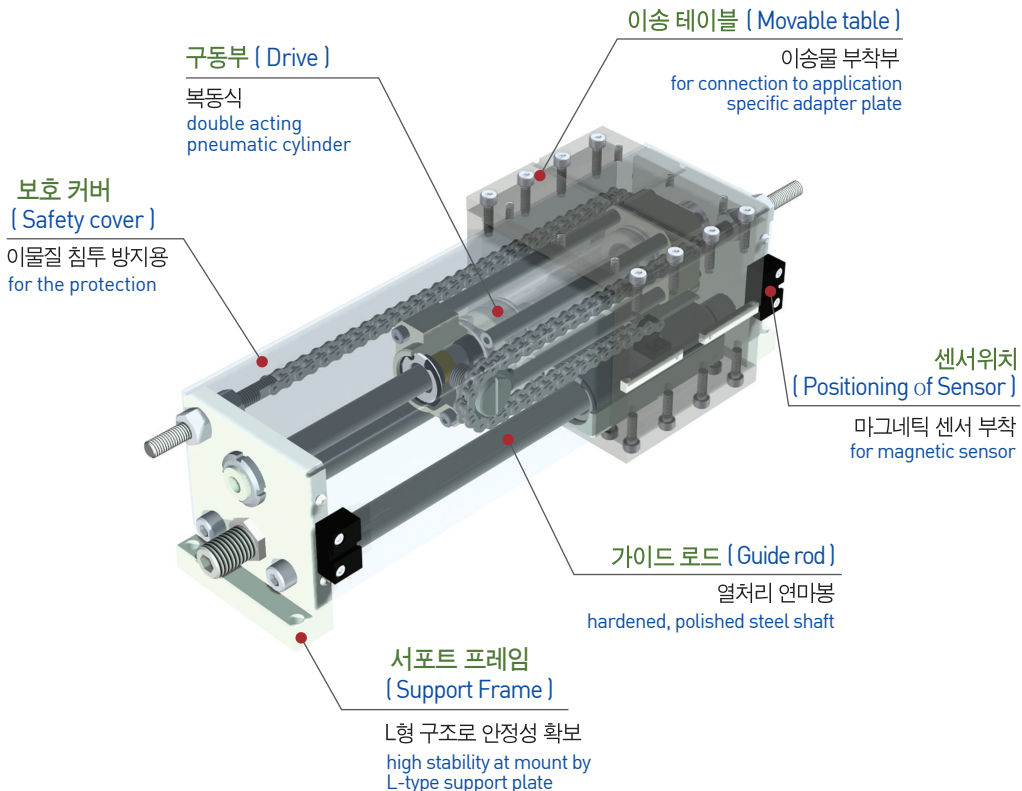
RH
<b>RHC</b>
RHW
RHS
TL
GC
SC
JC
NE
NT
DG
NO
NF
JO
JSR9
JCR9

## 특징 (Character)

- 체인을 이용 행정거리를 2배 확대한 배속 슬라이드 실린더로 일반 슬라이드 실린더의 2배로 고속운전 가능  
Double speed slide cylinder on a twice enlarged stroke distance by using chain. possible to make high speed than usual cylinder speed.
- 이물질 혼입을 최소화하여 용접라인등 환경조건이 좋지 않은 장소에서도 실린더의 수명연장이 가능  
Capable of cylinder's life extension by minimizing dust contamination entrapment at welding line and poor environment condition as well
- 본기종은 보호카버형이며, 그외 표준형(RH), 광폭형(RHW), 슬림형(RHS)등의 기종이 있음  
This type is protection cover type, and there are standard(RH), wide width(RHW) and slim(RHS), etc.
- 성력화용 실린더로 긴행정이 가능하며 행정의 조정이 가능  
As a cylinder for elimination of labor, being possible to be long stroke and to adjust the stroke.
- 자계의 영향을 받지 않는 근접, 리미트 S/W 부착이 가능  
Being possible to attach proximity unaffected by a magnetic field and limit S/W

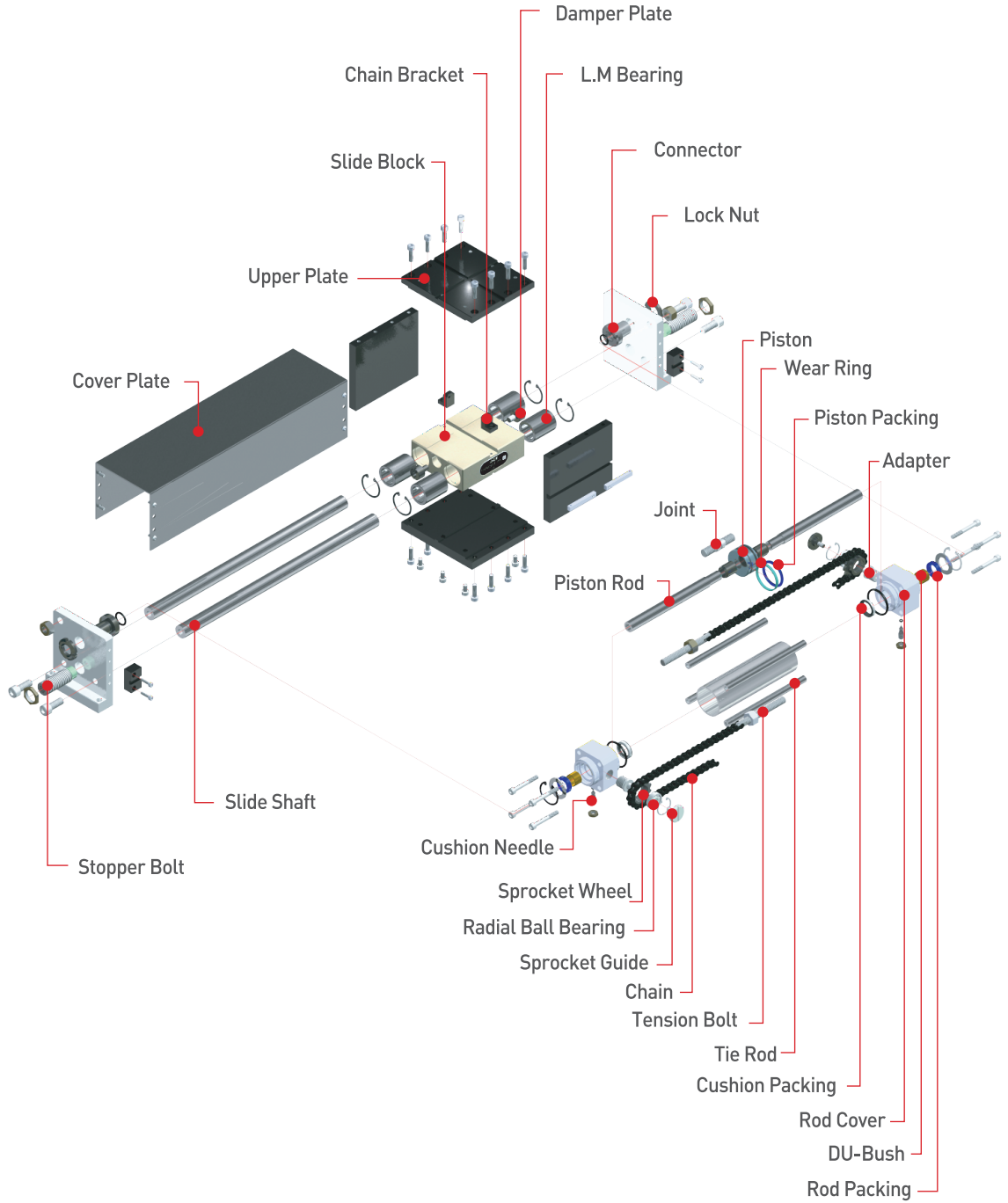


## 커버형 배속실린더 ( Cover type double speed )



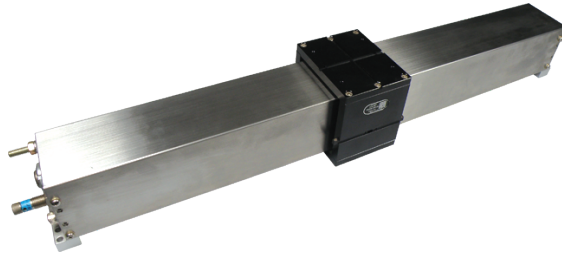
부품분해도 (Exploded view)

※ 본 분해도는 한 제품을 예시하였으므로 기종별로 차이가 있을 수 있습니다.  
 ※ This exploded view illustrates a certain product only. The contents may vary by product models.



주문기호 ( Ordering Code )

- RH
- RHC**
- RHW
- RHS
- TL
- GC
- SC
- JC
- NE
- NT
- DG
- NO
- NF
- JO
- JSR9
- JCR9



완충기  
Shock Absorber

무기호 - 스톱퍼  
 DA - 조절형타입 속압쇼바  
 N - 비조절형타입 속압쇼바  
 \* 제품에 부착되는 속압쇼바 사양 및 치수는 속압쇼바 상세 페이지를 참조 바랍니다.

\*Note  
 RHC30-M14 x P1.5      RHC40-M20 x P1.5  
 RHC50-M27 x P3.0      RHC63-M27 x P3.0  
 RHC80-M36 x P1.5

Nil - Stopper  
 DA - Adjustable Type  
 N - Non Adjustable Type  
 \* For the specification of shock absorber attached to the product and the shock absorber dimension, refer to details of shock absorber part.

행정  
Stroke

RHC30 : 200 - 600mm  
 RHC40 : 200 - 1000mm  
 RHC50 : 200 - 1000mm  
 RHC63 : 200 - 1200mm  
 RHC80 : 200 - 1500mm  
 1000mm이상 이송행정 필요시  
 먼저 JRT에 문의하십시오.  
 For more than 1000mm of stroke,  
 consult JRT

실린더직경  
Bore Size  
 30, 40,  
 50, 63, 80

제품명  
Product Name



센서명칭  
Sensor Type

무기호 - 센서 및 관련부품을 제공하지 않습니다.  
 RS(기존방식) 기입시, 본사에서 적합한 임의의 센서를 선정하여 부착해 드립니다.

\* 제품에 부착 가능한 센서 규격 및 주문기호는 센서 상세 페이지를 참조 바랍니다.

Nil - Sensor and relevant components are not supplied.  
 When entering RS(existing method), our Head Office will attach a suitable sensor selected at its option.

\* For the specification of sensor attachable to the product and the sensor order code, refer to details of sensor part.

센서수량  
Number of Sensor

1 - 1개  
 무기호 - 2개  
 1 - 1pc.  
 Nil - 2pcs.

센서 선 길이  
Sensor Cable Length

무기호 - 1m  
 3M - 3m  
 5M - 5m  
 Q □ - 커넥터 사용  
 \* 커넥터 사양 및 가능여부는 센서 상세 페이지를 참조 바랍니다.

Nil - 1m  
 3M - 3m  
 5M - 5m  
 Q - Quick connector  
 \* For the specification of connector and availability, refer to details of sensor part.

완충기수량  
Number of Absorber

1 - 1개  
 무기호 - 2개  
 1 - 1pc.  
 Nil - 2pcs.

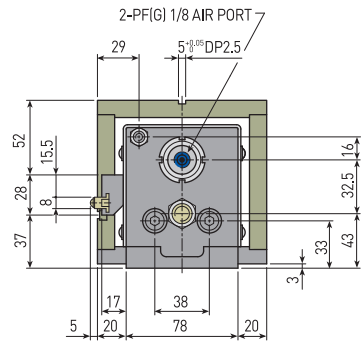
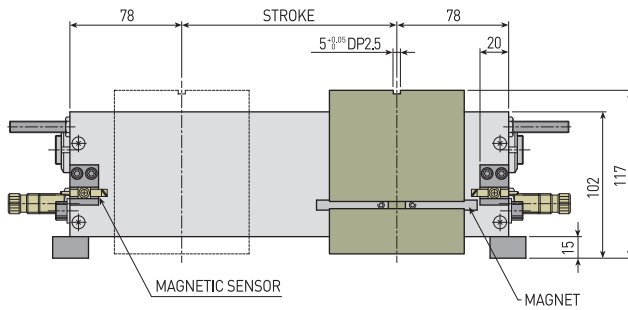
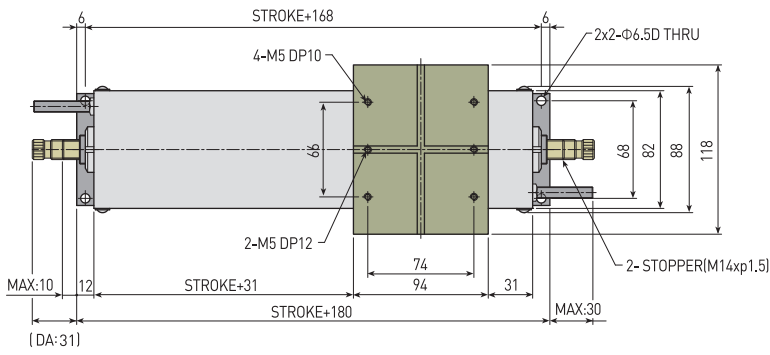
## ▣ 제품사양 ( Specification )

P=공기압력(bar) , St=행정(mm)  
P=Air Pressure[bar] , St=Stroke[mm]

제품명칭 Products Name	RHC30	RHC40	RHC50	RHC63	RHC80	단위 Unit
최대행정 Max Stroke	600	1000	1000	1200	1500	mm
최소행정 Min Stroke	200	200	200	200	200	mm
전진추력 Push Power	24.53(P-1.5)	51.01(P-1.2)	80.44(P-0.9)	127.53(P-0.7)	210.92(P-0.7)	N
후진추력 Pull Power	24.53(P-1.5)	51.01(P-1.2)	80.44(P-0.9)	127.53(P-0.7)	210.92(P-0.7)	N
최대이송속도 Max. Speed	1,000	1,000	800	500	500	mm/sec
최소이송속도 Min. Speed	300	250	250	150	150	mm/sec
제품중량 Weight	7.87+0.004xSt	7.52+0.012xSt	12.9+0.017xSt	15.7+0.03xSt	21.0+0.04xSt	kg
배관접속구 Fitting size	PF(G) 1/8	PF(G) 1/8	PF(G) 1/4	PF(G) 1/4	PF(G) 1/2	
1사이클당 공기소모량 Air consumption quantity	0.5xSt	1.1xSt	1.6xSt	2.6xSt	4.3xSt	cm <sup>3</sup>
반복정밀도 Repetition Accuracy	±0.1					mm
사용압력 Operating pressure	3 to 7					bar
주위온도 Ambient temperature	-5 to 60					℃
윤활 Lubrication	불필요 Needless					

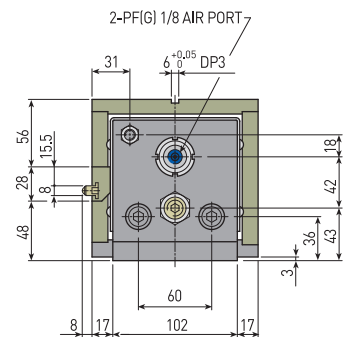
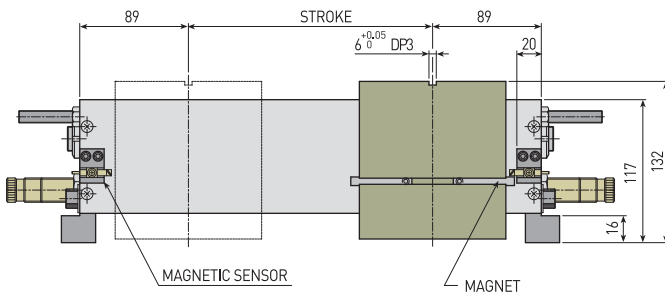
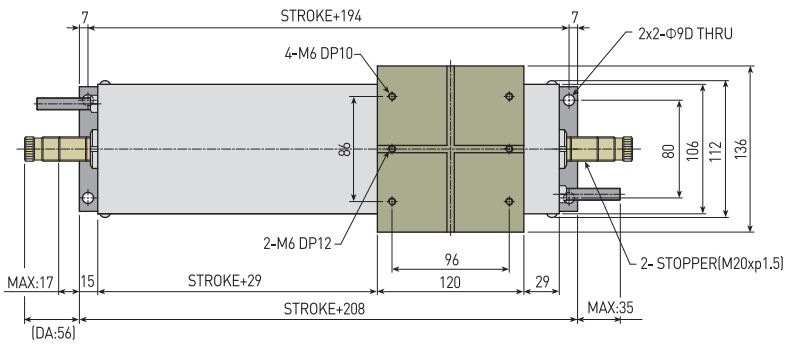
## ▣ NOTE

## RHC-30

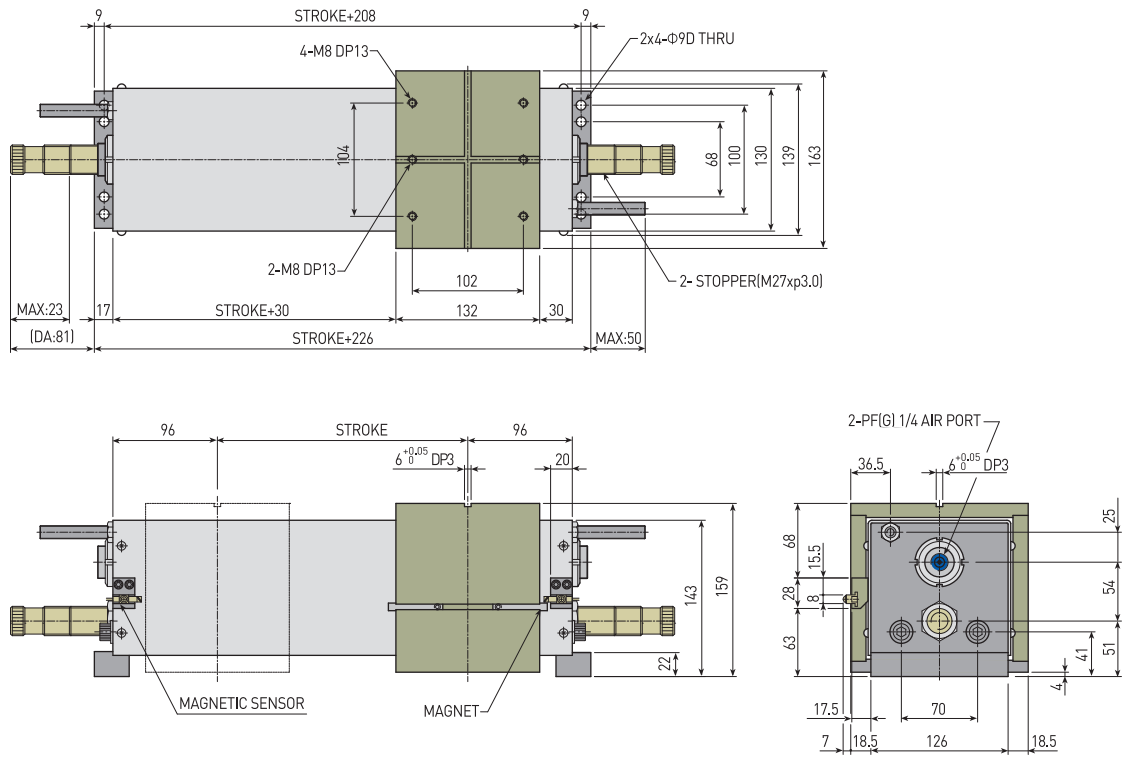


RH
<b>RHC</b>
RHW
RHS
TL
GC
SC
JC
NE
NT
DG
NO
NF
JO
JSR9
JCR9

## RHC-40



RHC-50



RHC-63

